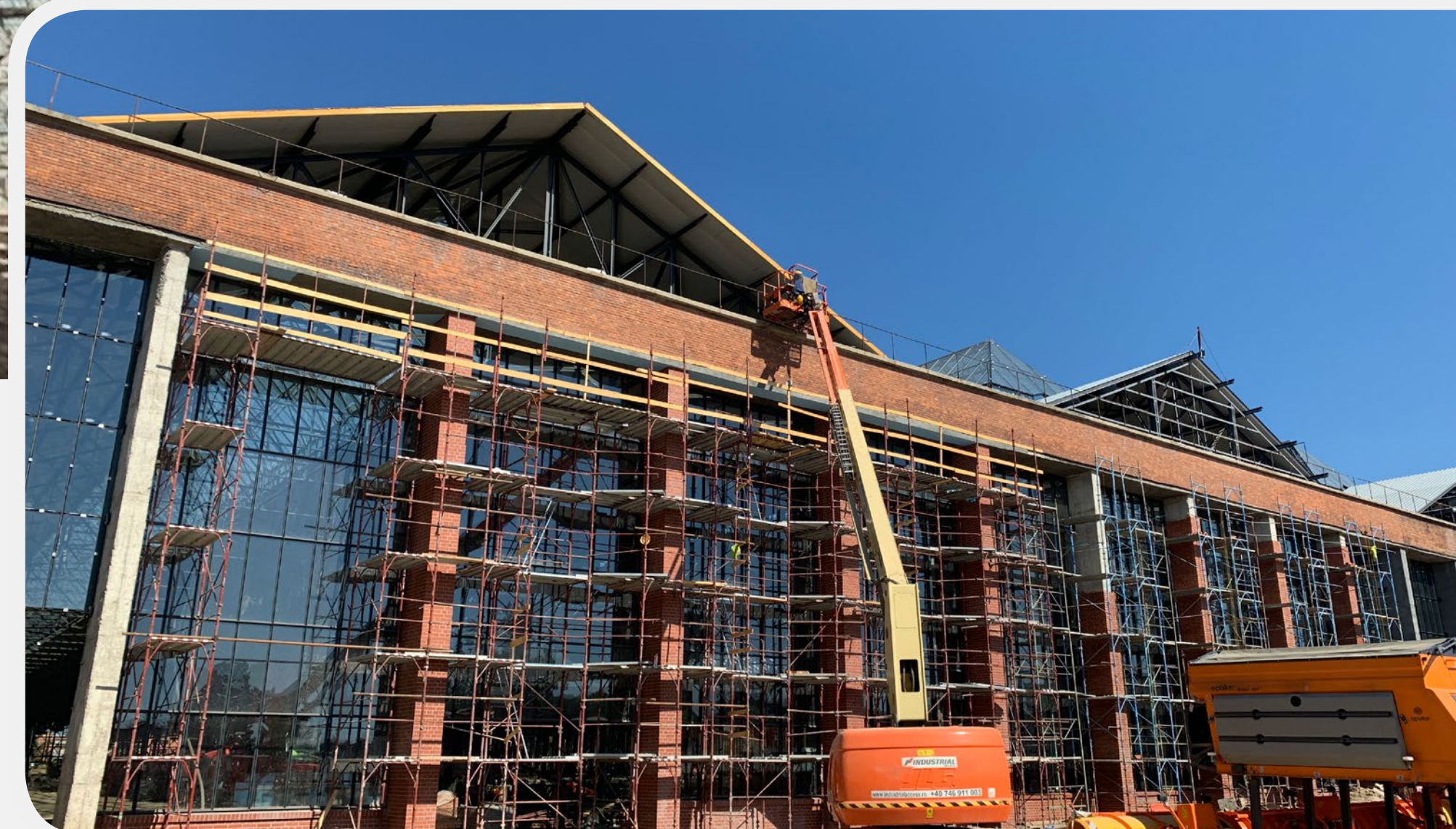
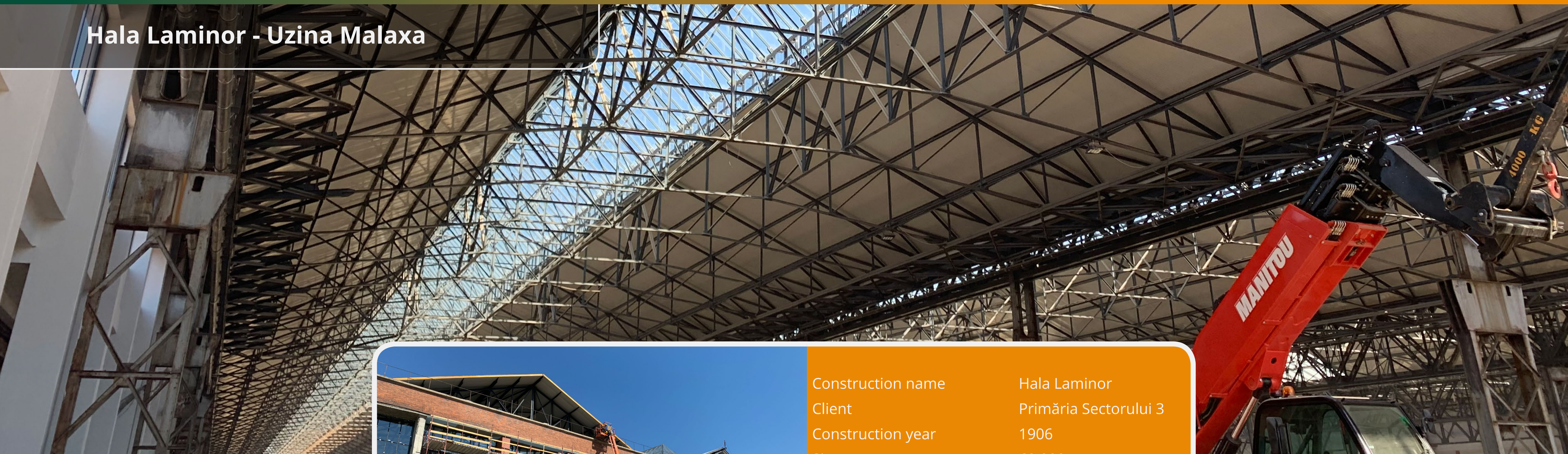


Hala Laminor - Uzina Malaxa



Construction name	Hala Laminor
Client	Primăria Sectorului 3
Construction year	1906
Size	60.000 tons
Date of application	Troughout 2019
Location	Bucharest, Romania

This historical landmark was built in 1936 and used as a steel factory throughout the Soviet era as part of the Malaxa factories.

The Malaxa factories were founded in 1921 in Bucharest by Nicolae Malaxa, a Romanian engineer and industrialist. Main activities were the repairing of the rolling stock, manufacturing steam locomotives, diesel locomotives, car-engines and passenger coaches, Diesel engines, brake equipment, special alloy steels. By the end of the 1930s, the Malaxa factories were one of the biggest industrial groups in Southeastern Europe, and the main provider of equipment for the Romanian Railways during the period.

It had been abandoned for over 50 years when renovation started in 2014. In 2020 it will relive as a commercial centre giving home to shops and offices.

C3 C2 | High > 15 jaar

Layer 1 16838 UniCure HSC

Total



120µm

120µm



extreme corrosion
resistant



permanently
flexible



40% less film
thickness



impermeable

Hala Laminor - Uzina Malaxa

